

CCi NOZZLE

sales@ccnozzle.com

ccnozzle.com

K4 Tank Wash Nozzle

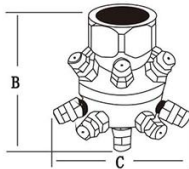
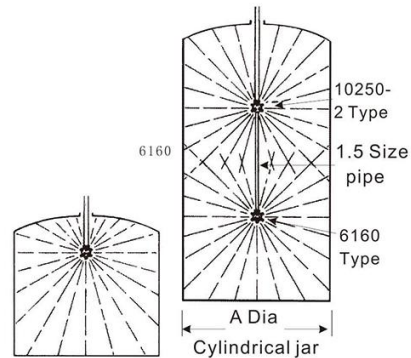
Design features

The 6160 fixed tank washing nozzle assembly features a large flow capacity for cleaning tanks up to 3.1 meters in diameter.

The flow rates can be changed by using the size of 1/4" or 1/8" full cone spray nozzle. The 6160 nozzle can pass through tank mouth of 130mm of large in diameter.

For cleaning large tanks where extra-large flow capacity is used to clean the tank which diameter reaches 6.7 meter. It uses size of 1/2", 3/4" or 1" full cone to change the flow rates.

The 10250-1 nozzle assembly can pass through tank mouth of 230mm in diameter. For deep tanks the 10250-1 version is available with a 1.5 inch bottom outlet connection for use with a pipe extension and a 6160 nozzle assembly.



6160 Type



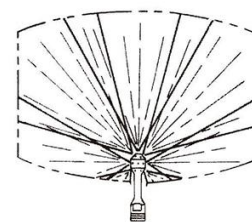
10250 Type

On Application

- Washbox defoaming
- Stock tank cleaning

Performance data

Pipe size NPT or BSPT (female)	Nozzle in the first order number	Flow rate (L/Min) at different pressures & Aprox. Max. Tank Dia								Tank dia A (m)	Size	
		1.5 Bar		2 Bar		3 Bar		3.5 Bar			Height B (mm)	Dia C (mm)
		L/min jar A (m)	Diameter jar A (m)	L/min jar A (m)	Diameter jar A (m)	L/min jar A (m)	Diameter jar A (m)	L/min jar A (m)	Diameter jar A (m)			
3 Inch	10250-1-1/2	280	3.0	320	3.5	390	3.5	415	4.0		166	191
	10250-1-3/4	580	3.5	660	4.0	800	4.5	860	5.0		174	210
	10250-1-1	1000	4.0	1130	5.0	1370	6.0	1470	6.5		183	229
1 1/2 Inch	6160-1/4GG5	35		40		48		52		1.2	114	114
	6160-1/4GG10	70		80		97		104		2.1	114	114
	6160-3/8GG22	155		177		215		230		3.0	121	127



9800 model

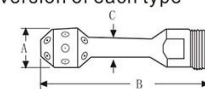
Design Features

The 9800 washing nozzle is designed for effective cleaning of small containers. The nozzle is available in a choice of 15 or 21 full cone spray tips that can provide complete coverage of the interior surface of the small containers at pressure up to 10 bar.

The 9800 nozzle fits through a standard drum mouth. It can be installed on a self-driven drum washer. The biggest diameter of the spray tip is 35mm with a 16mm reduced neck design. Constructed of SS, this nozzle is an ideal application when max. corrosion resistance is required.

Dimensions and weight

Based on largest/heaviest version of each type



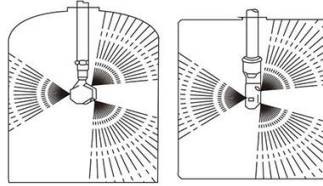
Performance data

Nozzle order number	Capacity (L/min)							
	1Bar	2Bar	3Bar	4Bar	5Bar	6Bar	7Bar	10Bar
9800-15-SS	-	-	-	20	23	25	26	31
9800-21-SS	-	-	-	28	31	34	36	43

Nozzle serial number	9800-
Pipe joints NPT or BSPT (male)	1 Inch
A (mm)	35
B (mm)	156
C (mm)	16
Net Weight (Kg)	0.51

36250

28250



Container cleaning

Design features

Feature of 36250/28250 Compact Nozzle:

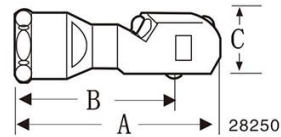
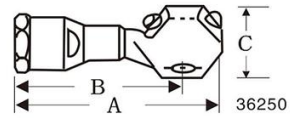
There are three high-pressure flat fan spray nozzles at the rotary spray head. The spray tip should be precisely oriented, in order to well wash all inner surface.

Therefore, there two models of nozzle can be used to effectively wash inner of small bottle, jarand barrel.

36250 Nozzle body is made of anticorrosive plastic, and bearing spring is made of hard stainless steel for max. wearable life and high pressure washing with max. Pressure of 5 bar.

28250 Impact Nozzle can pass inlet with diameter of 42 mm. The sector spray head with low flux has good effect to wash small container. The spray body is made of 316 stainless steel for max. wearable life and high pressure washing with max. pressure of 7 bar.

Size and weight



Performance Data

Nozzle Order Number	Capacity (L/min)					
	1Bar	1.5Bar	2Bar	2.5Bar	3Bar	4Bar
36250-STCN16-PP	49	59	68	76	84	94
36250-STCN18-PP	101	121	140	159	179	201
28250-STCN27-316SS	22	27	32	38	43	49
28250-STCN29-316SS	40	48	55	62	70	79

Nozzle Model	Joint NPT or BSPT (Female)	A (mm)	B (mm)	C (mm)	Hexagon (mm)	Net Weight (KG)
36250-	3/4inch	145	115	85	75	0.55
28250-	3/4inch	122	100	56	44.5	0.68

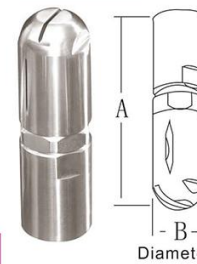
Design features

19250 Compact Nozzle can generate self-rotary drive for side spraying by two flat fan spray tip with 25 mm hole. The top hatch makes a whole global spraying available.

The main material is 316 stainless steel, while axletree and axletree circle are made of rigid stainless steel for longest wearability life.

The max. pressure is 13 bar and max temperature is 180 centigrade.

19250



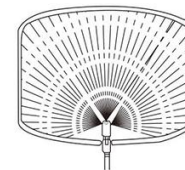
Diameter

Performance Data

Nozzle Order Number	Capacity (L/min)							
	1.5Bar	3Bar	4Bar	5Bar	6Bar	8Bar	10Bar	12Bar
19250-STCN5-316SS	14.0	19.7	23	25	28	32	36	39
19250-STCN6-316SS	15.9	22	26	29	32	37	41	45
19250-STCN7-316SS	19.5	28	32	36	39	45	50	55
19250-STCN8-316SS	22	32	36	41	45	52	58	63
19250-STCN9-316SS	28	39	46	51	56	64	72	79

Size and weight

Nozzle Number	19250
A(mm)	89
B(mm)	25.4
Net Weight(KG)	0.23



Ordering info

The above three models can be made of brass. For other materials, please mark out.